

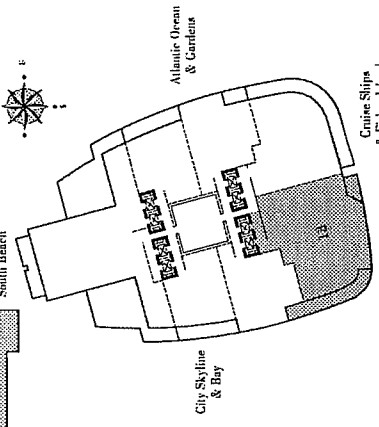
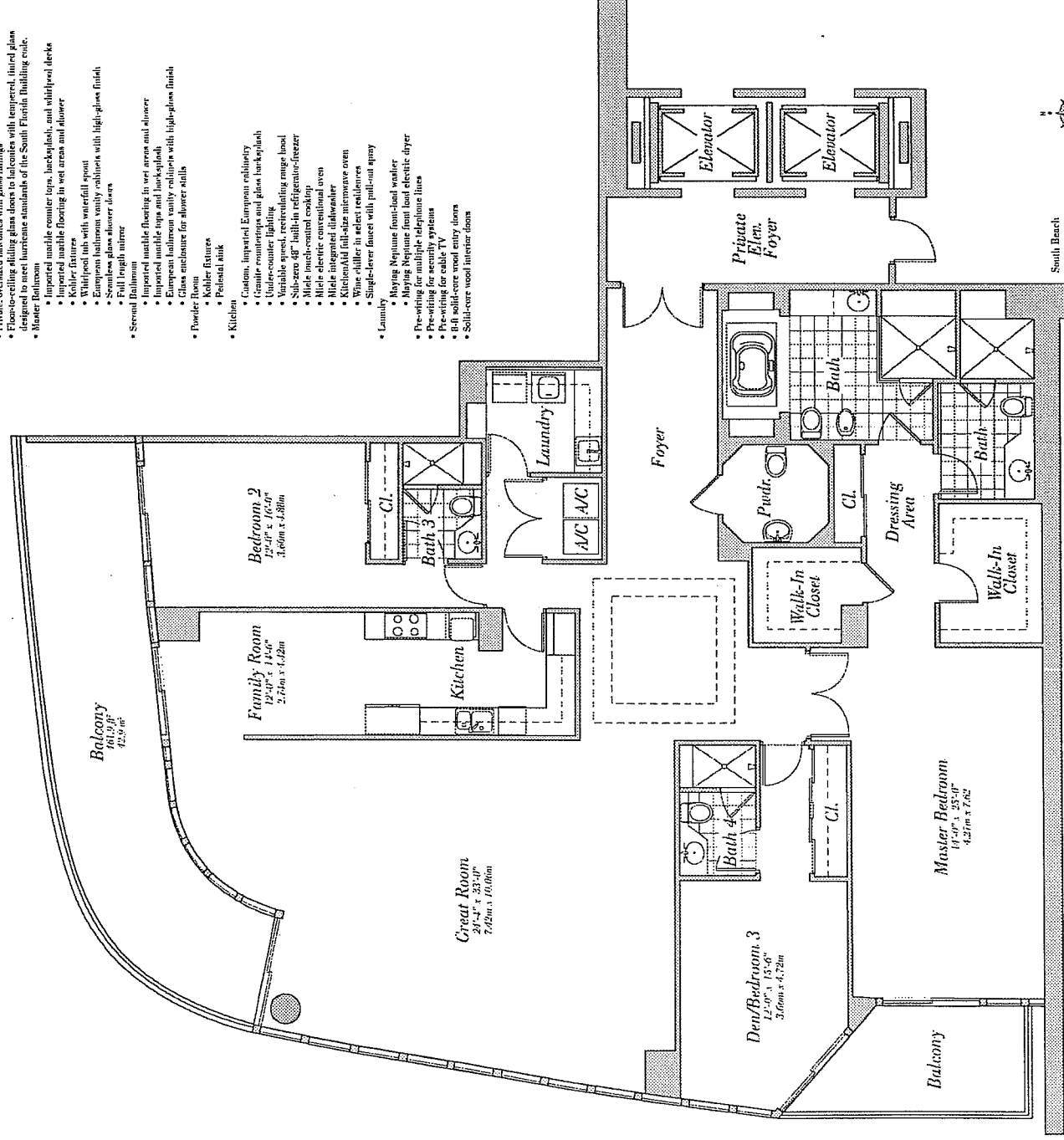
Residence 13

Floors 30-35

3 Bedroom, 4 Bath, Powder Room
3,335 s.f. 309.9 m²

Residence Features:

- 10' ceilings
- Private, oversized balconies with glass railings
- Floor-to-ceiling sliding glass doors to balconies with tempered, tinted glass designed to meet hurricane standards of the South Florida Building code.
- Master Bedroom
- Impaired marble counter tops, backsplash, and vitrolipal decks
- Impaired marble flooring in wet areas and shower
- Kitchen
- Walk-in tub with waterfall spout
- European bathroom vanity cabinets with high-gloss finish
- Seamless glass shower doors
- Full length mirror
- Several Ballroom
- Impaired marble flooring in wet areas and shower
- Impaired marble tops and backsplash
- European bathroom vanity cabinets with high-gloss finish
- Glass enclosure for shower stalls
- Powder room
- Toilet fixture
- Bidet fixture
- Kitchen
- Custom, Imperial, European cabinetry
- Granite countertops and glass backsplash
- Under-counter lighting
- Variable speed, recirculating range hood
- Sub-zero 48" built-in refrigerator-freezer
- Multiple touch-control cooking
- Multiple electric conventional oven
- Multiple integrated dishwasher
- KitchenAid full-size microwave oven
- Wine chiller in select residences
- Single-lever faucet with pull-out spray
- Laminate
- Heavy Neptune front-load washer
- Heavy Neptune front-load electric dryer
- Pre-wiring for multiple telephone lines
- Pre-wiring for security system
- Pre-wiring for cable TV
- 8-ft solid-core wood entry doors
- Solid-core wood interior doors



CONTINUUM
ON SOUTH BEACH